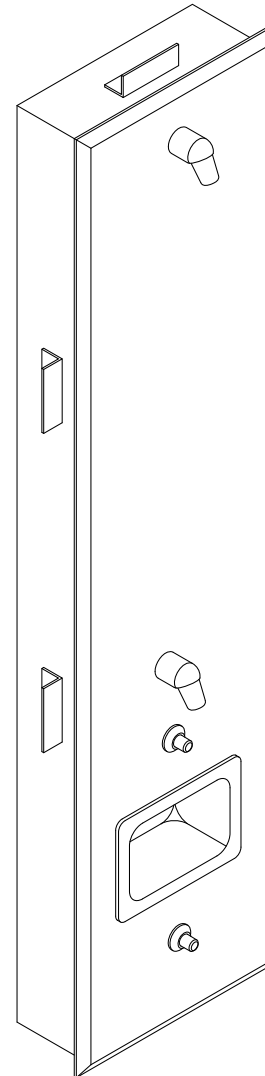


WRS-BF-FA-2HD Front Mounted Recessed Handicap Shower Panel w/ (2) Fixed Showerheads

✓	MODEL NUMBER	VALVE TYPE
	WRS-PM1-PM1-BF-FA-2HD	SINGLE TEMP PNEU. METERING VALVE
	WRS-PM2-PM2-BF-FA-2HD	DUAL TEMP PNEU. METERING VALVE
	WRS-EL1-EL1-BF-FA-2HD	SINGLE TEMP ELECTRONIC
	WRS-EL2-EL2-BF-FA-2HD	DUAL TEMP ELECTRONIC
	WRS-NV-NV-BF-FA-2HD	NO VALVE



Recommended Specifications _____

Handicap front access recessed shower panel shall be Willoughby Model No. **WRS-___-BF-FA-2HD**.

Shower panel shall be fabricated from 14 gauge, type 304 stainless steel with exposed stainless surfaces polished to a #4 satin finish. Mounting frame shall be fabricated from 18 gauge galvanized steel.

Standard equipment shall include: shower valving (as selected from the table above), (2) vandal resistant shower heads (NPS).

Shower panel shall attach to mounting frame with security screws. Unit requires no chase area for installation and maintenance.

Visit our website at <http://www.willoughby-ind.com>

2210 West Morris Street • P.O. Box 21217 • Indianapolis, IN 46221

(317) 638-2381 • Fax: (317) 638-6110 • (800) 428-4065

MODEL NUMBER AND OPTIONS:

1.) Base Model Number:

- WRS-BF-2HD-FA Front mounted recessed handicap shower

3.) Options:

- NPS Non-Adjustable Penal Shower Head (Standard)
 APS Adjustable Penal Shower Head
 CSH Anti-Suicide Shower Head
 PBH Anti-Suicide Pushbutton (Pneumatic)
 RD Recessed mounted soap dish
 SD Surface mounted soap dish

2.) Valve Selection:

- NV No Valve
 PM1 Single Temp. Pneu. Metering
 PM2 Dual Temp. Pneu. Metering
 EL1 Single Temp. Electronic
 EL2 Dual Temp. Electronic

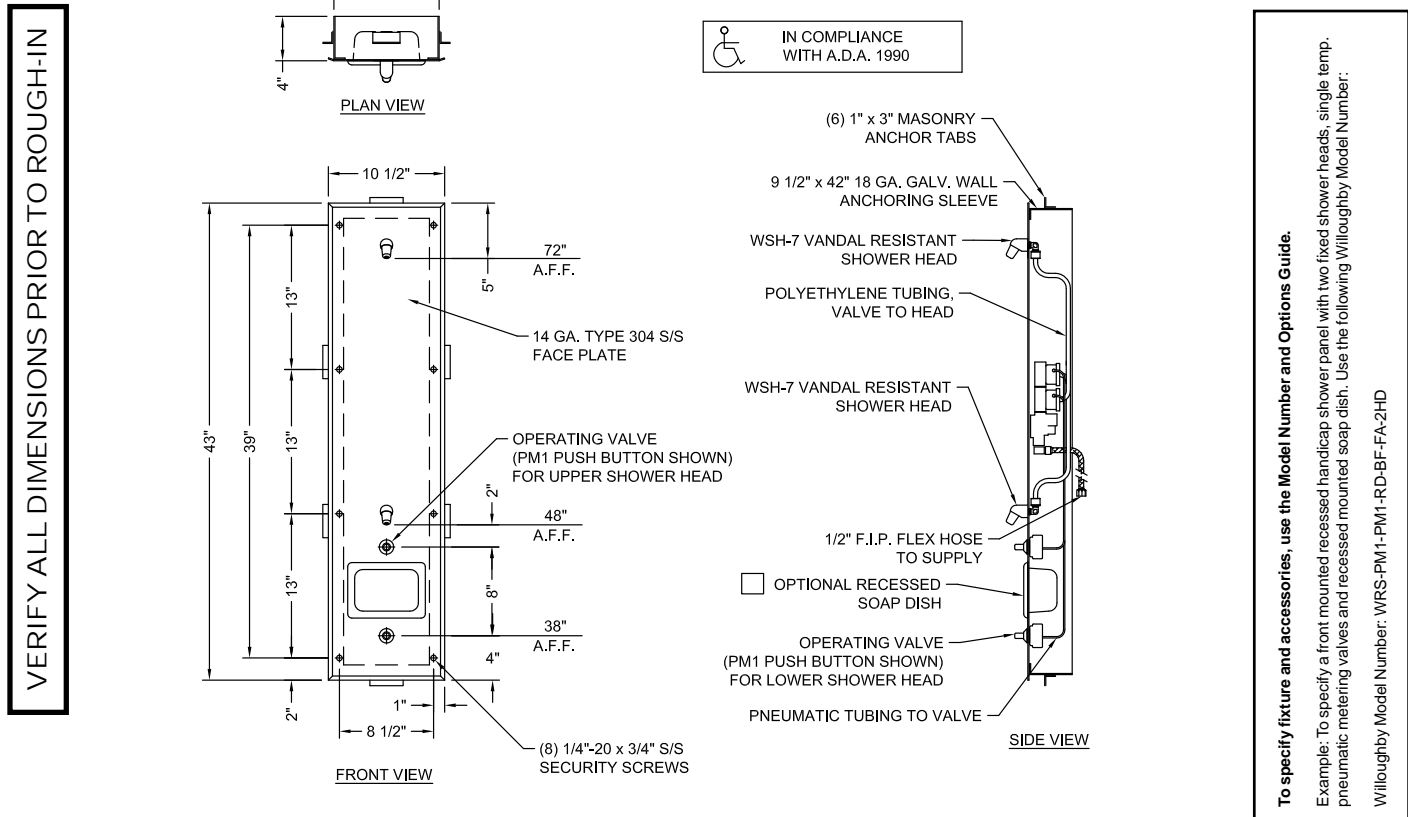
Other: _____
 Other: _____

Valve Manifold Options:

Pneumatic or Electronic only:

- MA2

Drawing Approved For Manufacturing By: _____ Date: _____ Company: _____
 Wall Thickness _____ Wall Type _____



To specify fixture and accessories, use the Model Number and Options Guide.
 Example: To specify a front mounted recessed handicap shower panel with two fixed shower heads, single temp. pneumatic metering valves and recessed mounted soap dish. Use the following Willoughby Model Number:
 Willoughby Model Number: WRS-PM1-PM1-RD-BF-FA-2HD

Willoughby Industries, Inc.