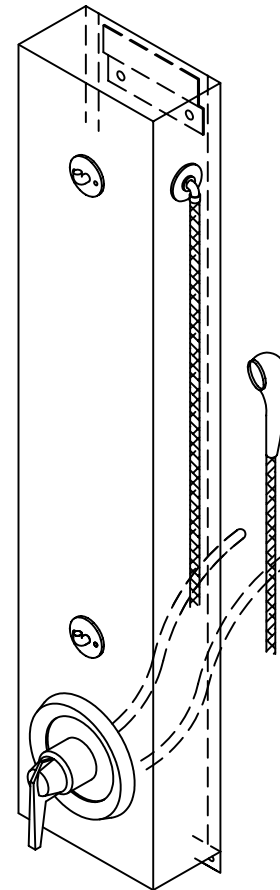


## CWSMS-FX-HL Series Single Station Surface Mounted Handicapped Wall Shower

✓	MODEL NUMBER	VALVE TYPE	SUPPLT CONN.
	CWSMS-PM1-FX-HL	SINGLE TEMP PNEU. METERING	1/2" H
	CWSMS-PM2-FX-HL	DUAL TEMP PNEU. METERING	1/2" H&C
	CWSMS-EL1-FX-HL	SINGLE TEMP ELECTRONIC	1/2" H
	CWSMS-EL2-FX-HL	DUAL TEMP ELECTRONIC	1/2" H&C
	CWSMS-PB-FX-HL	PRESSURE BALANCING	1/2" H&C
	CWSMS-TSV-FX-HL	THERMOSTATIC	1/2" H&C
	CWSMS-H-FX-HL	SINGLE TEMP COMPRESSION	1/2" H
	CWSMS-HC-FX-HL	DUAL TEMP COMPRESSION	1/2" H&C
	CWSMS-NV-FX-HL	NO VALVE	NONE



(Some options may be shown)

### Recommended Specifications \_\_\_\_\_

Surface mounted single station shower shall be Willoughby Model No. **CWSMS-\_\_\_**-FX-HL (select valve from table above).

Shower panel shall be fabricated from 16 gauge, type 304 stainless steel with exposed stainless surfaces polished to a #4 satin finish.

Standard equipment shall include: shower valve \_\_\_\_\_ (as selected from table above), quick disconnect, vacuum breaker, and hand held showerhead with two (2) hooks.

Shower unit shall be factory assembled, tested for proper operation and ready for installation by contractor. Anchoring shall be by "Z" clip and bottom flange, with anchoring hardware by others. Unit requires no chase area for installation and maintenance.

Visit our website at <http://www.willoughby-ind.com>

2210 West Morris Street • P.O. Box 21217 • Indianapolis, IN 46221

(317) 638-2381 • Fax: (317) 638-6110 • (800) 428-4065

## MODEL NUMBER AND OPTIONS:

**1.) Base Model Number:**

- CWSMS-FX-HL Single Station Surface Mounted Handicapped Shower

**2.) Valve Selection:**

- PM1 Single Temp. Pneu. Metering  
 PM2 Dual Temp. Pneu. Metering  
 EL1 Single Temp. Electronic  
 EL2 Dual Temp. Electronic  
 PB Pressure Balancing  
 TSV Thermostatic Mixing Valve  
 H Single Temp. Compression  
 HC Dual Temp. Compression  
 NV No Valve

**4.) Shower Head Options:**

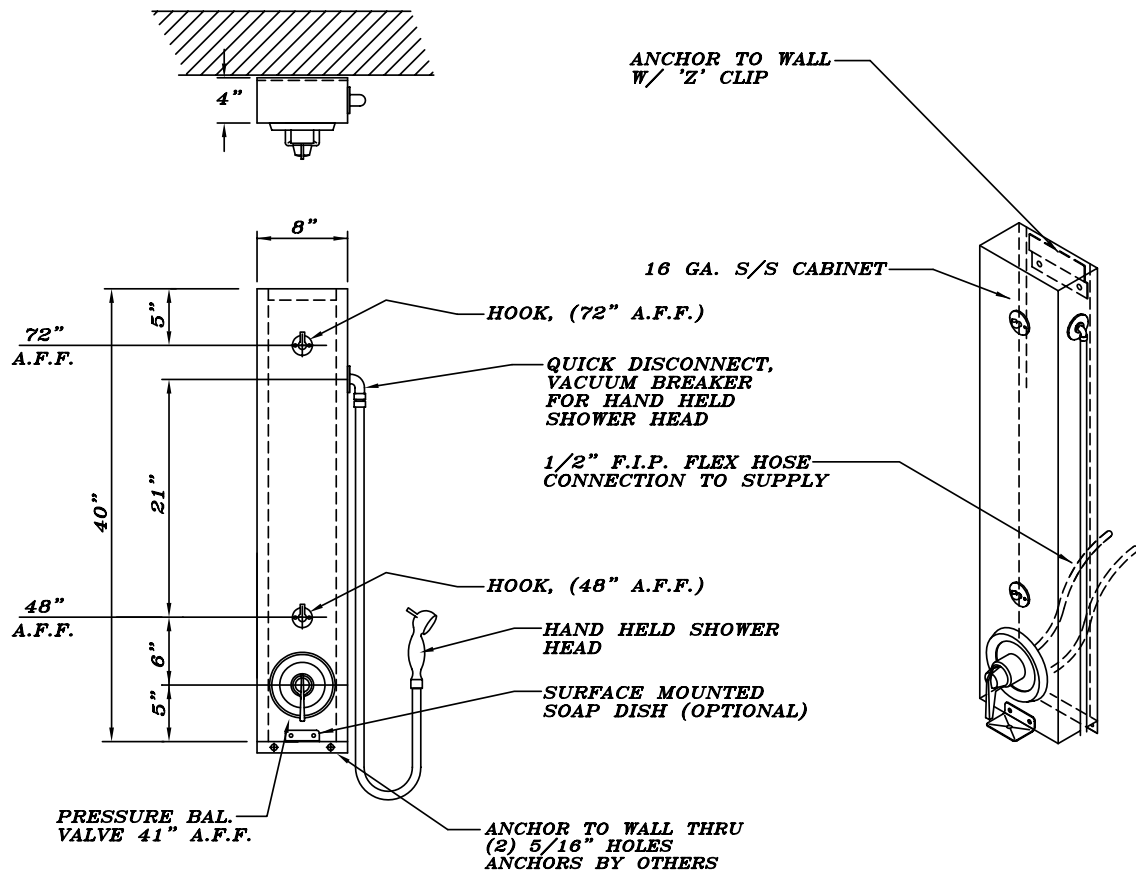
- FX Flexshower  
 HL Hi-Lo (2 mounting hooks for Flexshower)

**5.) Options:**

- GB Grab Bar (Specify Dimensions)  
 GX Individual Checkstops  
 RD Recessed Soap Dish  
 SD Surface Mounted Soap Dish  
 PS Pipe Shroud (Specify Length)  
 Other: \_\_\_\_\_  
 Other: \_\_\_\_\_

Drawing Approved For Manufacturing By: \_\_\_\_\_ Date: \_\_\_\_\_ Company: \_\_\_\_\_  
 Wall Thickness: \_\_\_\_\_ Wall Type: \_\_\_\_\_

**VERIFY ALL DIMENSIONS PRIOR TO ROUGH-IN**



## Willoughby Industries, Inc.